

May 14, 2021 / Alberton Avenue, Mt Albert, Auckland 1025 / +64 9 846 2044 / [www.mags.school.nz](http://www.mags.school.nz)

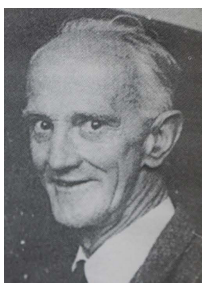
## From the BoT Chair

### The Countdown is On

Almost a hundred years ago, the MAGS legacy began. It followed an earlier announcement at a school assembly by the Headmaster of Auckland Grammar School that students of their school living west of Mt Eden Rd would become foundation pupils at a new school.

Amongst those starting at MAGS in 1922 were two men who had an influence on my life.

One a foundation teacher, the other a foundation student. Both were instrumental in making MAGS what it is today: an educational institute that provides young people with an opportunity to be the best that they can be in any or all of the pillars of academic, cultural or sporting excellence. An important fourth pillar is service to the school and the wider community.



The two men were Herbie Towers (left), a young mathematics teacher in 1922, and Lindsay (Dad) Weir (below left), a foundation student, who also went on to teach at MAGS from 1938 to 1978.



Among the many legendary teachers over the years at MAGS these two men stand tall, and whenever our older Albertians gather to reminisce their names are often mentioned.

At our Centenary Celebrations in May next year, we will remember with pride how a school that started with 299 boys in 1922 is now one with more than 3000 students and one that has earned and continues to earn its place in the



## Weekly Notices



### Key Dates

Click [here](#) for the Calendar

**Tuesday, May 18**  
Year 11 Meet the Mentors Night, 7pm

**Thursday, July 8**  
Last day of classes for Term 2

**Friday, July 9**  
Staff Only Administration Day  
End of Term 2



### Sport

#### Photo Essays



Hockey Girls 1st XI v EGGS  
Click [here](#)

history of education in New Zealand.

Thanks to Albertian Dale Griffiths and his team of staff and former students, who are coordinating the celebrations.  
Stay tuned for news soon of the itinerary and the launch of an online community where Albertians, current and former staff and parents, and friends of MAGS can connect and re-connect.

Per angusta, ad augusta

Greg Moyle  
Board of Trustees Chair



Football Boys 1st XI  
v Selwyn College  
Click [here](#)



Rugby Boys 1st XV Pre-season  
v Otahuhu College  
Click [here](#)

**Fixtures and results**  
Click [here](#)

## Farm hosts dairy trainees



The NZ Dairy Industry Awards Trainee of the Year practical competition was held on the ASB MAGS Farm this week.

There were 11 competitors, coming from Southland to Whangarei, completing a range of tasks, with the champion to be crowned at the prizegiving tomorrow night in Hamilton. They had small modules involving animal health, silage testing, fencing and calf nutrition. In their downtime they helped Farm Manager Peter Brice complete a tree box to keep cattle away from one of the new shade trees planted on the farm.

Mr Brice said, "I was impressed by the ability of the trainees, all of whom had spent less than three years on a dairy farm.

"Their breadth of knowledge was amazing and I learnt a fair bit from them. What was really



neat is that they were all great people working towards similar goals of success in the dairy industry. It is one thing to have brains, but another to have personal skills that match. The trainees were all amazed at the location of the farm and were very jealous they never had the opportunity to learn on-farm at school."

The awards play a key part in the personal development of dairy farmers in New Zealand. They allow participants to come together and form new friendships, learn from experienced farmers and grow themselves into

industry leaders.

Mr Brice added, "I look forward to seeing former MAGS students involved in the near future."

---

## Mural collaboration completed



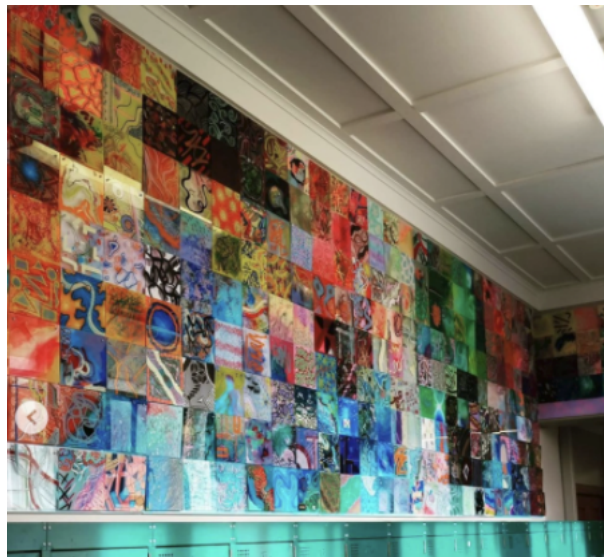
Over Term 1 and during the holidays MAGS students collaborated with artist Evan Woodruffe (pictured above) on a mural project – Colour Community. Visual Arts Leaders worked to collect and seal hundreds of colourful perspex squares made by all of the Visual Arts classes.

More than 100 students collaborated to create an original, abstract work; while all of the Visual Arts Leaders helped to arrange the composition.

Visual Arts Leader Lucy Woodall said, "We drilled them into big, painted wooden boards and carried them up from E Block to be placed just outside the entrance to the mezzanine floor of the hall (pictured).

"We would just like to say a very special thank you to Evan Woodruffe, Mr Corkery, Whaea Ainsley and Mr Drumm for supporting this project. We learnt so much from Evan about being an artist and working collaboratively as he helped to guide us through this project.

"All of us really appreciated this experience and being able to produce such an amazing end product."



## Boys 1st XV to debut Centenary kit



This year, the Rugby Boys 1st XV will wear a modern day replica of the original MAGS 1st XV uniform worn in 1923.

1922 was the year the school opened but the timing did not allow for a new uniform to be made. They wore the Grammar uniform with a Cambridge Blue sash sewn on for that first year.

The Cambridge Blue with the white collar is still worn today by all our junior teams and it wasn't until the 90s that the shorts and the collar changed to blue and gold respectively. The hoops known today were introduced in the mid-2000s and were reminiscent of the top of the original socks.

The 1st XV is again proudly sponsored by Jean Smith of Barfoot and Thompson Mt Albert, and will be led this year by Captain Tama Anderson with the help of Vice Captain Riki Reuben.

The management (pictured below) has a wealth of experience, with a Commonwealth Champion and a number of National, Auckland and Premier Club titles across the group. It is led this year by Head Coach and Albertian Tony Hanks, who has years of experience as a high performance coach and manager currently for NZ Hockey and previously with the Blues, Japan's Honda and the UK Wasps. He is joined by assistant coaches Karl Te Nana, Chris Lowrey and Ropate Rimakama, all provincial players, and many of you will know KT as the leading try-scorer for the National 7s team in 2000-01.

Chris and Ropate, both proud Albertians, have represented Auckland and both played in successful MAGS 1st XV teams. Director of Sport Allie Wright joins them as team manager, with Tawhai Whitewood as Physio, and Meng Mafoe the strength and conditioning coach.

The team looks forward to its first game next weekend here at MAGS against Sacred Heart where not only will they debut the new uniform but will also perform the new school haka – Takatū – before kickoff at 2.30pm on the Sir BG Williams Field.



*From left to right: Karl Te Nana, Tony Hanks, Allie Wright, Chris Lowrey and Ropate Rimakama.*

---

## **Prefects hone leadership skills**



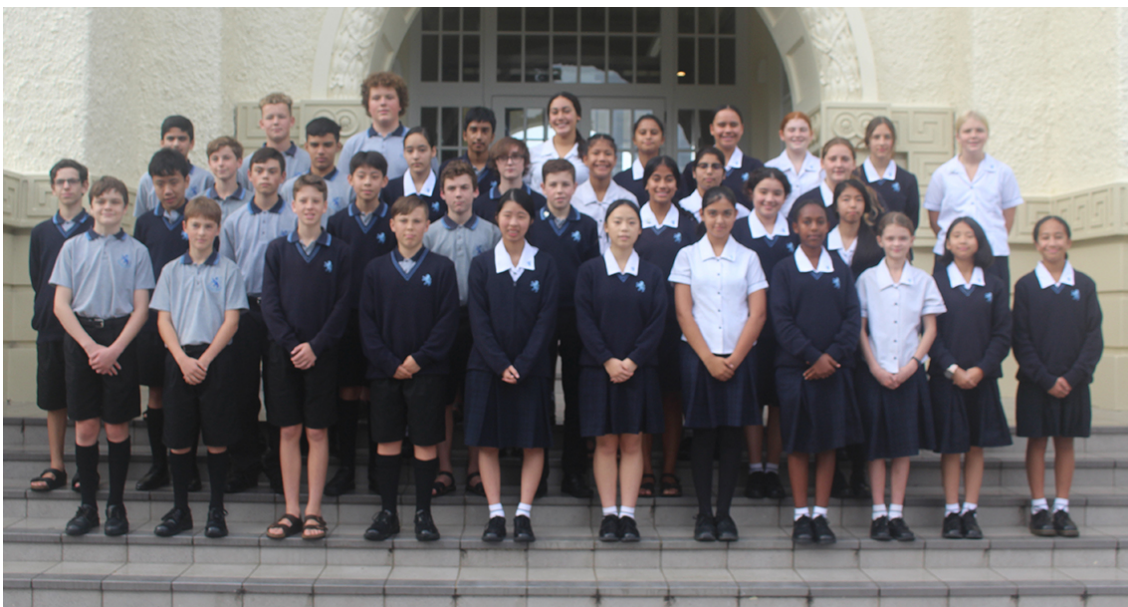
Some of our Prefects attended the World Vision Youth Conference and mixed with other school leaders on Monday.

The day was about improving their leadership skills, learning about systemic injustice and how to implement change in their communities.

Deputy Head Girl Maria Boow said the conference was not only inspiring and educational but also allowed school leaders to learn from each other and swap ideas.

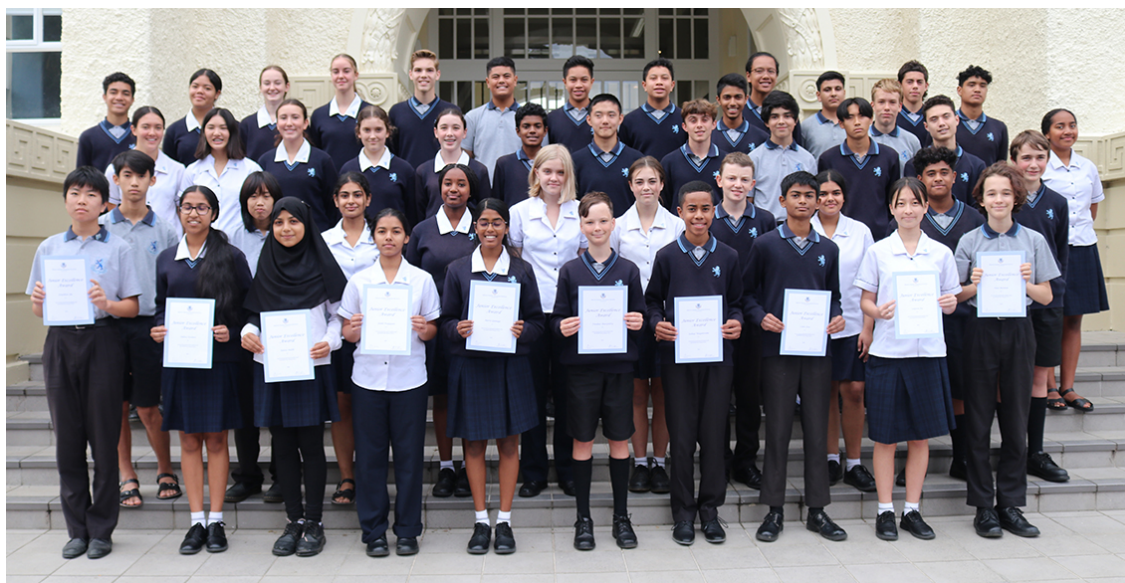
---

## Excellence all round



The Junior Excellence Awards for Term 1 were presented to students from Year 9 (pictured above) and Year 10 (pictured below) at assemblies on Monday and Tuesday this week. Certificates are awarded to up to two students from each mentor class at the end of each term. You can see the list of Year 9 students [here](#) and Year 10 students [here](#). These awards recognise students who have demonstrated personal excellence by doing one or more of the following:

- shown huge improvement in the quality of work
- submitted outstanding work
- shown significantly improved effort
- exemplified the 'MAGS Way' values
- been a highly supportive and helpful member of their mentor class
- persevered through hardship to achieve success



---

## Tickets on sale for *The Crucible*

From Monday to Thursday next week, Level 2 Drama is performing the first Drama production of the year – *The Crucible*.

The Arthur Miller play is a historical drama about the Salem Witch Trials of 1692-1693. Around this time, the small town of Salem, Massachusetts, hanged people convicted of being witches.

The shows are at 7pm in the Dance and Drama room (E9) from Monday to Thursday, May 17 to 20.

There are two casts performing so if you're coming to see a particular student, ask them about the right night to see them.

Tickets are just \$5 for MAGS students and staff, and \$10 otherwise.

Due to the limited space, you do need to reserve a seat as there will be no door sales available on the night.

If you are interested in coming, please email Miss Hughes at [chughes@mags.school.nz](mailto:chughes@mags.school.nz) or visit the Performing Arts Offices.

## UPCOMING ARTS EVENTS

Art Board Show – Thursday, June 17,  
MAGS, 6pm

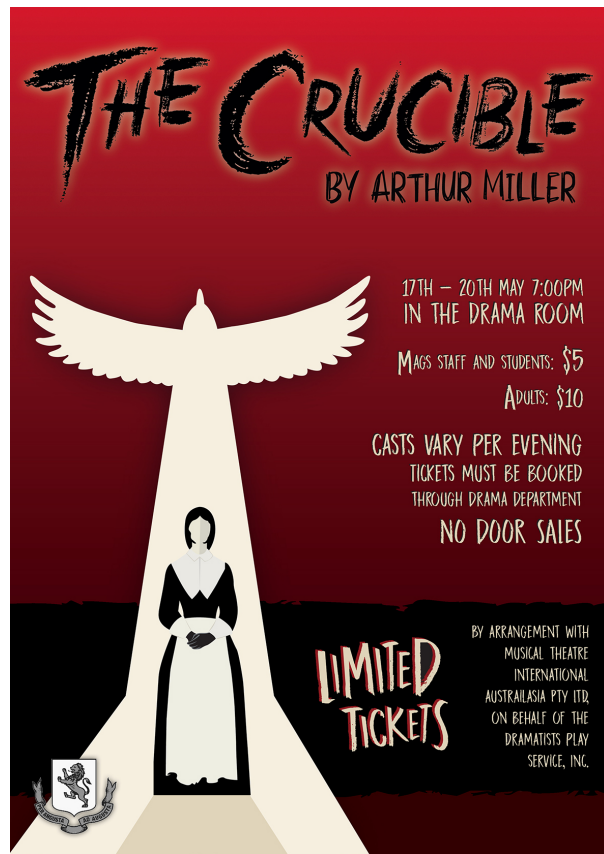
YouDance Youth Dance Festival –  
Tuesday, June 22, Raye Freedman  
Centre, 7.30pm

The Big Sing – Thursday, June 24,  
Auckland Town Hall, 7pm

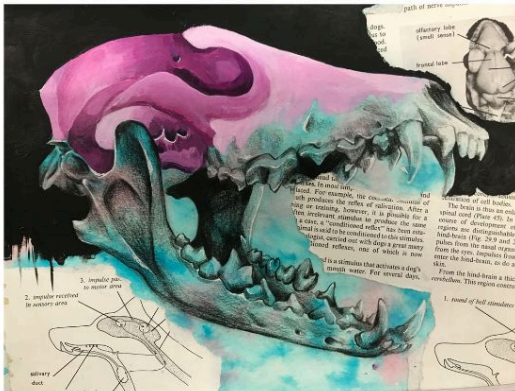
Contemporary Music Concert –  
Thursday, July 1, Raye Freedman Centre,  
7pm

Classical Music Concert – Friday, July  
2, Raye Freedman Centre, 7pm

Unity Cultural Concert – Friday, July 9,  
Dorothy Winstone Centre, AGGS, 7pm



## Collage Visions in Small Gallery



An exciting new show – Collage Visions – is on display in the Small Gallery in E Block. Curated by Ben Mimms and Dasha Leonhartsberger, it is an exhibition of top collages from Year 11 art students alongside the group collages produced by Junior Art Club. Junior Art Club runs every Monday after school and is led by Dasha, Elka Aitchison and Ms Gallo, who give up their time to share their love of the Arts with others. The members of Junior Art Club have been working together in groups to create dynamic and playful artworks. Elka and Dasha wanted the first project to be collaborative and fun, and a chance for arty junior students to meet other like-minded students.



## Parking restrictions at MAGS

Please be aware that Parking Restrictions are also in place on the school grounds outside of school hours.

The only parking on site available to all supporters, visitors, students, parents and staff are a limited number of white parks in the top car park. Once the parks are full, the school carpark will be closed and only pool patrons will be allowed to enter.

Mount Albert Aquatic Centre patrons will have access at all times during the day to the bottom car park. The yellow marked car park spaces are allocated for pool patrons only. All cars will need to display their parking pass or pool receipt on their dash to ensure that they are not towed from these council parking spots. Please note there are also 'No Parking' or '24hr Tow away' areas clearly indicated. If you park here, you also risk being towed.

To make sure that you are not disappointed when travelling to watch games at MAGS, we recommend that you park on the surrounding roads and walk to the games via the Alberton Ave entrances.

We understand the frustrations with parking in Auckland so want to make sure you are prepared when travelling to MAGS sporting events.

Thank you for your support of the teams.

---

## MAGS Art Show needs you!

We're hard at work planning the MAGS Art Show and we'd love to have you join our Committee to help make it a success.

We have a great opportunity for a parent or friend of the school who wants to be involved in this amazing event.

Do you have marketing and PR experience?

We'd love your help to advise us on our marketing plan (we just need you to check our planned approach).

Suggestions for PR opportunities and help with the writing of our catalogue or programme would also be gratefully received.

We'd love to have you join our fun committee and share your expertise.

Please contact Emma at [events@mags.school.nz](mailto:events@mags.school.nz) if you're interested.

---



## Year 11 Meet the Mentors/NCEA Evening

All Year 11 parents and guardians are invited to an evening presentation next Tuesday, May 18, 7pm-8pm, in the FW Gamble Hall.

Senior staff will present on 'Understanding NCEA' and other significant Year 11 information. There is also an opportunity to meet the Mentor (form teacher) of your child if you wish. Please note that this is not a formal sit-down parent-teacher conference; more like a short 'meet and greet' after the presentation.

Students are not required to attend and will likely already be aware of the information being presented. However, they may attend if they wish.

Information in hard copy will be handed out on the evening, along with ideas and next steps for ensuring your child has the opportunities to be successful in their first full year of NCEA.

### Other relevant upcoming dates:

**May 31 to June 4 – Year 11 Practice Assessments/Exams**

**July 28 & 29 – Year 9-13 Parent-Student-Mentor Conferences**

**September 14 to September 23 – Year 11-13 Prerequisite Exams**

**November 8 to December 2 – 2021 NCEA Exams** (timetable [here](#))

---

## Sports Update

### Upcoming Premier Sport

Today at 5pm, the Badminton Premier team plays Mt Roskill at Auckland Badminton.

Our Premier Basketball teams are at home tonight, with the Girls hosting Massey at 6pm, while the Boys face off against Auckland Grammar at 7.30pm.

Tomorrow at noon, the Football Boys 1st XI are away to Mount Roskill Grammar.

On Wednesday, the Rugby League 1st XIII have their first home game at 4pm against Manurewa High School; while the Football Girls 1st XI play Baradene at Michaels Ave at 4pm.

At the time of writing, draws for other sports were unavailable.

For more fixtures, and the latest results, click [here](#)

---

## General Notices



NEW ZEALAND  
COLLEGE OF  
CHIROPRACTIC

*graduating hands, hearts & minds*

# Open Day

## Saturday 15 May

**Come and explore our campus and meet students and staff. Hear about our programme, campus life and admissions pathway.**



**Register now at  
[chiropractic.ac.nz/openday](http://chiropractic.ac.nz/openday)**

**New Zealand College of Chiropractic  
6 Harrison Road, Mt Wellington, Auckland**

Alberton Ave, Mt Albert, Auckland 1025  
Tel: 64 9 846 2044 Fax: 64 9 846 2042  
[www.mags.school.nz](http://www.mags.school.nz)



*Copyright © 2021 Mount Albert Grammar School, All rights reserved.*

Want to change how you receive these emails?  
You can [update your preferences](#) or [unsubscribe from this list](#)