



## From the Headmaster

### Community of Learning (Kahui Ako)



The past 18 months have seen Mount Albert Grammar School working alongside eight of our contributing Primary and Intermediate schools as part of the Community of Learning initiative.

Over 7000 students are involved in the Mount Albert Community of Learning (Kahui Ako), making it one of the biggest in the country. At the centre of our work is the goal of raising student achievement throughout the school journey of our students from Years 1 to 13.

Joining a secondary school like MAGS for the first time can be a challenging step for a Year 9 student. While most junior students arrive at our school gates already armed with the precursors to learning, we are also conscious that each of those students will be at a different stage along their personal educational pathway.

Our Community of Learning is allowing secondary, intermediate and primary schools to better align practices and expectations and in doing so, smooth the transition into secondary education.

School leaders and teachers from across the eight schools are meeting regularly, sharing data about individual students and finding common goals to work towards. The ultimate outcome is better teaching and better learning.

The Mount Albert area is blessed with outstanding schools. While still in its early days, our Community of Learning promises to further strengthen each one of us.

Have a good weekend.

**Patrick Drumm**

## Weekly Notices



### Key Dates

[Click here for the 2018 Calendar](#)

#### **Monday, 11 June**

Year 11 & 12 Mentoring Conferences

#### **Thursday, 14 June**

Visual Arts Board Show and Business Market Evening, 4.30pm, (see details below)



### Sport



#### **Photo Essay**

Rugby League First XIII v Papatoetoe High

[Click here](#)

#### **Registration and trials for summer and winter sports**

[Click here](#)

#### **Fixtures and results**

[Click here](#)

## Megacrew in top four nationwide



Having won the Schools Division of the Project Youth Hip Hop Dance Competition three times, the MAGS Dance Megacrew entered the Open Division this year for an added challenge.

Competing over Queen's Birthday Weekend in Mt Maunganui against some of New Zealand's largest dance companies, MAGS finished fourth in a close competition – a fantastic result for a school team.

Director Arts Co-Curricular Jacqui Cesan said, "Congratulations to Ms French, leaders Holly and Janelle Kara, Karissa Tapu and Moanekah Va'ai and all the dancers for a great result."

Ms French said the dance competition was a fantastic experience, as was staying at a local marae.

"We stayed overnight at Tamapahore Marae. The students really enjoyed the experience and learnt a lot about Tikanga Maori. And a huge thank you to the three other teachers that came with me: Miss Goff, Miss Mackinnon and Miss Bovaird."



### ARTS EVENTS COMING UP IN TERM 2:

**Saturday, 9<sup>th</sup> June**

The Wondercats compete at Rockquest Auckland Central regionals, Auckland Girls Grammar School.

**Thursday, 14<sup>th</sup> June**

Visual Arts Board Show, MAGS, 4.30-6.30pm.

**Tuesday & Wednesday, 26<sup>th</sup> & 27<sup>th</sup> June**

Year 12 Drama Production, MAGS, 7pm.

**Tuesday, 3<sup>rd</sup> July**

Annual Music Concert, Raye Freedman Centre, Epsom, 7pm.

---

## Parent-Son Breakfast bookings open



Bookings have now opened for the Parent-Son Breakfast at which Pio Terei will be guest speaker. Entertainer and performer Pio Terei is also a presenter and spokesperson for The Parenting Place, which develops education programmes for parents and families. He will speak at the Inaugural Parent-Son Breakfast for Year 9 & 13 students on Thursday, June 28.



Bookings opened last week for the Parent-Daughter Breakfast, with Bernice Mene as guest speaker.

Ms Mene is a former Silver Ferns captain and netball commentator who has also taught at MAGS in the past and helped set up the Netball Academy.

**anne DUNCAN**  
REAL ESTATE LIMITED . Licensed REAA 2008

[anneduncan.co.nz](http://anneduncan.co.nz)

She will speak at the Parent-Daughter Breakfast for Year 9 & 13 students on Thursday, June 21.

Both events have been kindly sponsored by Anne Duncan Real Estate and will be held at MAGS in the Maurice Hall Atrium, with tickets \$40 for one student and one adult. They start at 7am and

finish at 8am to let guests get on with the rest of their day.

An email with details about payment options should have been sent out to parents of Year 9 and 13 students. For further inquiries, email Martin Sykes [msykes@mags.school.nz](mailto:msykes@mags.school.nz)

---

## Alberton performances



Alberton served as a stage today as well as inspiration for performances by Year 10 & 11 Drama Academy students.

As part of their NCEA assessment, students create a performance after researching the history of the historic homestead with a focus on the Kerr-Taylor family. They visit the site and hear from historians about the stories of the house.

Using these stories the students devise a performance as part of their NCEA assessment. Common themes include the status of women, financial hardship, and the impact of World War I. These are then performed at Alberton House. HoD Drama Gerald Urquhart said, "It works well as the students feel a tangible connection to the local history. The idea that they are playing characters who have actually lived in the place they are performing is fascinating for them."

Mr Urquhart added, "The work of the team at Alberton, especially Rendell McIntosh and Jocelyn McQuaid, has been invaluable."



---

## Busy month ahead in Visual Art

Next Thursday starting at 4.30pm, E Block hosts the Board Show and Business Market Evening. Senior Visual Art students will exhibit their latest work, while Year 11 Business Studies students will operate stalls selling food, drinks and other products. Cash only.

Mount Albert Grammar School presents



# The Board Show & Business Market Evening

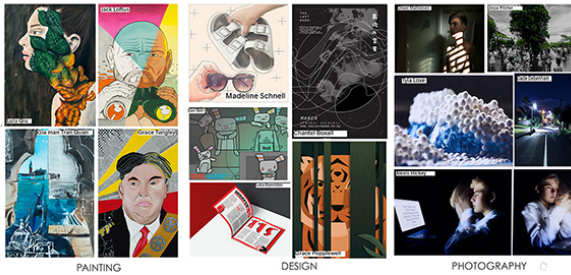
4.30 – 6.30, Thursday 14th June. Week 7, 2018



**The Board Show** will be exhibiting the latest work created by all of the 2018 Mt Albert Grammar senior Visual Art students.



**Year 11 Business Studies** students will facilitate approx 22 market stalls. These will offer a range of affordable food, beverages and products from as little as \$3. Bring cash as No EFTPOS will be available.



It's the start of a busy few weeks in the Visual Art department, which launches into its Winter Workshops from June 25.

Visiting artists will work with students and give talks as part of the workshops.

One of the highlights will be the visit of Michel Tuffery, a renowned New Zealand artist of Pasifika descent, who will work with a variety of classes during class times and lunchtime to beautify the outdoor area beside E3.

Also on the bill are Joon He Park, a surrealist painter; Lama Tone, a NZ architect with Pasifika influences; Tim Moss Mason, a 3D CG artist; and Jade Robertson, a professional illustrator.

For the full schedule, click [here](#)

---

## Back to nature



Two classes of Year 10 Ag students headed out to the Waitakere Ranges to learn about predators, birdlife and plant species in the natural environment.

With Arataki Visitor Centre as their base, the students were taught by Peter King, who was head of science at Green Bay High School for 27 years.

He showed them how to monitor predators using a Black Trakka tunnel and peanut butter. The students learned how to do a five-minute birdsong count, and how to use a quadrat to assess seedling regrowth.

HoD Agriculture and Horticulture Esther Hancock said, "The students agreed it was a fascinating day and are looking forward to writing a report about how farmers have an important role in kaitiakitanga – or guardianship of the land – in order to protect New Zealand's all-important clean, green image."

For more photos from the trip, click [here](#)

---

## Masters of Monetary Policy

Mount Albert Grammar School has been selected as one of six schools to compete in the final of the Reserve Bank of New Zealand's Monetary Policy Challenge.

This is a national competition where students try their hand at making a Monetary Policy decision: setting the main interest rate that influences the cost of borrowing and interest paid on savings. The competition is directly influenced by Macroeconomic Achievement standards taught in Year 12 and Year 13 Economics.

Year 13 students Liam Milbank, Gemma Loveday, Anvilly Huang, Patrick Wong and D'arcy Brown presented an argument to Reserve Bank Economists on New Zealand's economic conditions and made a prediction for the Official Cash Rate (OCR) decision. They then demonstrated their understanding of Monetary Policy and Economic theory in a question and answer session.

The finalists will travel to the Reserve Bank in Wellington for the national finals on 3 July to give an oral presentation and compete for the title of challenge winner. The winning team will be invited back to the Reserve Bank on 9 August to attend the Monetary Policy Statement media conference.

---

## Reminder about Academic Mentoring on Monday

With Year 11 and 12 participating in an Academic Mentoring programme on Monday, 11 June, students and parents are reminded that for Years 9, 10 and 13 this will be a day for independent study, at home.

Year 9 and 10 students are to use this day to prepare for subject specific exams in Week 7, and Year 13 students for ongoing internal assessment preparation and general study.

Supervision can be provided for any students in Years 9, 10 or 13 who are unable to remain at home on this day – please advise your child's Dean should this be required.

Year 11 and 12 students and their parents are reminded to check the times they have booked for Academic Mentoring. It's important to be on time for these sessions, which provide the



opportunity for these students to meet with their mentors, accompanied by their parents, to discuss progress, acknowledge strengths and address areas for increased focus.

---

## Space Camp 2019



Budding Astronauts should pick up an an expression of interest form for Space Camp 2019 from Ms Slabbert or email her at [sslabbert@mags.school.nz](mailto:sslabbert@mags.school.nz)

Space Camp takes place in July next year at the US Space & Rocket Center in Huntsville, Alabama. Participants will spend five days doing simulated missions, team building and physical and mental challenges.

After the serious business of Space Camp, students will spend a few days at theme parks in Florida.

To find out more about Space Camp, click [here](#)

---

## Reminders about leave requests/lost property

Requests for non-school related leave of one day or more during the school year must be addressed to the Headmaster, Mr Patrick Drumm, at least two weeks before the start of proposed leave.

Please give the dates of proposed absence from school and the purpose of the leave.

Catering for student leave requires a lot of work on the behalf of administration staff and teachers, so please give as much advance notice as possible.

If in writing, please address requests for leave to: The Headmaster, Mr Patrick Drumm, Mt Albert Grammar School, Alberton Avenue, Mt Albert, Auckland 1025. If emailing, please send

to: [paheadmaster@mags.school.nz](mailto:paheadmaster@mags.school.nz)

Parents are also reminded to make the school aware of any change of circumstances or contact details. These can be sent to [details@mags.school.nz](mailto:details@mags.school.nz) so the school database can be updated.

**Lost Property:** The school is holding a lot of lost property. Parents are reminded that all student clothing and sports gear should be clearly labelled. Lost property can be collected from the Student Centre or PE Lost Property in Gym 1.

---

## Sports update

### Results this week

The Rugby Girls 10s continued their winning ways yesterday with a 57-7 thumping of Edgewater College at MAGS.

The Hockey Girls First XI also had a convincing win, 6-2 over Avondale College. In the away win, Ciana Campi and Maisy Simpson bagged doubles, while the other scorers were Lulu Grimes and Anjali Panchia.

The Lacrosse Premier Girls played away to Epsom Girls Grammar yesterday and went down 13-4.

On Wednesday, the Rugby League 1st XIII played Papatoetoe High on the Sir BG Williams Field and won 18-4.

---



### Premier games this weekend



The Premier Girls and Boys Basketball teams both play Westlake tonight at MAGS at 6pm and 7.30pm respectively.

Tomorrow, the Football Boys 1st XI play Auckland Grammar at MAGS at noon.

At 11.30am tomorrow, the Netball Premiers take on One Tree Hill Premiers on Court C at the Auckland Netball Centre.

The First XV Rugby team is away to Sacred Heart College tomorrow, with the kick-off time changed to 1.30pm.

For full fixtures and results, click [here](#)

---



## Sports trials and registrations



Students are encouraged to register for sports teams and trials taking place in Term 2.

[Click here for the registration forms](#)

---

## General notices

LOCATION: MAGS SCHOOL HALL  
TICKETS AVAILABLE AT FINANCE OFFICE  
MAXIMUM TEAMS OF 8

\$10 PER PERSON  
OR \$60 FOR A TABLE



Ebenezer Community School



MOUNT ALBERT  
GRAMMAR SCHOOL

# Quiz Night

MAGS  
2018

FRIDAY 22 JUNE

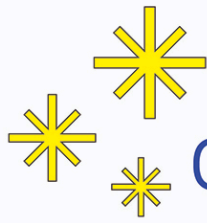
The annual MAGS Quiz Night will be held on Friday, 22 June.

Make up a team and come along to enjoy a night of trivia and fun. Teams can have a maximum of eight people. The event will run from 6pm-9.30pm in the MAGS hall, with pizza and drinks available for sale on the night. A variety of spot prizes are up for grabs along with prizes for the winning team, best dressed team and individual.

Pre-book tickets at the Finance Office for \$10 per person, or book a table of eight for only \$60. All funds raised will be going towards Ebenezer Community School in Delhi.

---

MATARIKI  
FESTIVAL  
2018



# Matariki

@

## Owairaka Domain Art Installations

Local schools  
celebrate Matariki  
with art from recycled &  
re-purposed objects

Check out [www.facebook.com/Matariki-at-Owairaka](http://www.facebook.com/Matariki-at-Owairaka)

Top of  
Summit Drive, Mt Albert  
June 30<sup>th</sup> to July 9<sup>th</sup> 2018

"Schools creating in our community"



ST. LUKE'S CHURCH

# QUIZ NIGHT

SATURDAY 16<sup>TH</sup> JUNE / 7.30PM

ST. LUKE'S CHURCH, 704 NEW NORTH ROAD

**\$10 FOR QUIZ TICKETS**

**\$20 FOR QUIZ TICKETS THAT INCLUDE DINNER**

TEA, COFFEE AND LIGHT SUPPER PROVIDED / COLD DRINKS AND  
SNACKS FOR SALE / RAFFLES, SILENT AUCTION AND COIN TOSS

DINNER IS SERVED FROM 6.30

FOR TICKETS AND ENQUIRES, EMAIL [DENNIS.OCALLAGHAN6@GMAIL.COM](mailto:DENNIS.OCALLAGHAN6@GMAIL.COM)

OR PH/TXT 0274733987



Copyright © 2018 Mount Albert Grammar School, All rights reserved.

Want to change how you receive these emails?  
You can [update your preferences](#) or [unsubscribe from this list](#)