



July 31, 2020 / Alberton Avenue, Mt Albert, Auckland 1025 / +64 9 846 2044 / www.mags.school.nz

From the Headmaster

Weekly Notices

Looking to the Future



Key Dates



Tēnā koutou, e te whānau o Mount Albert Grammar School.

This week saw our Hall filled to capacity on consecutive evenings as we hosted current Year 8 students and their parents for our Information Evenings for 2021 Enrolments.

These are always some of the most important events in our calendar as we welcome future Albertians into our school and begin an induction process that will continue through to the end of next year.

The demand to be part of the MAGS learning community continues to grow exponentially.

Our 2021 cohort will be almost exclusively drawn from families living within the school zone although the Board of Trustees has approved a small number of 'out of zone' students to be accepted from the 2021 ballot, which will be conducted in September.

As we approach our Centennial celebrations in 2022, it will be very special to welcome our 100th Year 9 cohort into MAGS next year.

Our school is in great heart and we equally have great confidence in our newest arrivals continuing to steer MAGS successfully into our second century of serving the community of Mount Albert.

Per Angusta Ad Augusta

Have a great weekend.

Patrick Drumm
Headmaster

Click [here](#) for the Calendar

Tuesday, August 4

Future Pathways Expo, 4pm.
MH Building

Thursday & Friday, August 13 & 14

Artistry in Action dance
concert, 7.30 pm, Centennial
Theatre



Sport

Photo Essays



Rugby Girls 1st XV v

Aorere College

Click [here](#)



Football Boys U15

Knockout Cup

Click [here](#)

Fixtures and results

Click [here](#)

Jazz for lunch



Staff and students enjoyed jazz and soul grooves from two jazz bands at lunchtime today. The *Intersection* concert featured MAGS' Jazz Band (above) and the Abundant Life School (ALS) Jazz Band (below) from Kaitia.

Albertian and ALS Teacher in Charge of Music Dr Opeloge Ah Sam decided to take his band on a concert tour of Auckland after live performances were scrapped for the KBB Festival.

When fellow Albertian and Deputy Principal John Stradwick heard about his plans, he invited the ALS Jazz Band to perform in a "jazz-off" against our Jazz Band, with the ensembles playing three items each.

Before an appreciative audience, ALS started with *What's Going On?*, *Cantaloupe Island* and *Come Together*, and MAGS responded with *Backlash*, *Sway* and *Cheesecake*.



Albertian re-awarded Prefect badge



Albertian Colin Mathura-Jeffrey (1986-90) returned to MAGS on Monday, with Headmaster Patrick Drumm re-awarding the TV presenter and model his Prefect badge.

The badge was stolen along with some of his jewellery a few years ago.

Colin, who made a career in modelling before going on to TV presenting, also caught up with old school friend Reuben Ploeg (above left), who is now an English teacher at MAGS.

The loss of the Prefect badge had always bothered Colin, and he was grateful to MAGS for replacing it.



More Shakespeare Festival success



MAGS' Drama students have enjoyed more success in the Sheilah Winn Shakespeare Festival.

HOD Drama Gerald Urquhart said, "This year we were excited to have a scene selected for the Sheilah Winn National Shakespeare Festival. It was a student-directed reinterpretation

of *Romeo and Juliet*, in which the young lovers are separated by gender rather than name. From the many submissions around the country, the work of one of our actors was singled out for its excellence.

"Year 10 student Ruby Giblin (pictured above, far left) won "The Bit Part Player Who Best Supports the Other Players Award" for her portrayal of the Nurse in the scene. It is wonderful recognition for the Drama Committee member. It speaks volumes to the dedication and talent of Ruby as well as the culture created by the cast and director David Laxon."

You can watch the submitted video [here](#)

There will also be an opportunity to see an extended version of the scene at the Year 13 Drama Academy Showcase, on Wednesday, August 26. David Laxon has added scenes to tell a more complete version of this interpretation. More information about the showcase will come closer to the date.

Mr Urquhart added: "I would like to congratulate all students involved for their work."

Artistry in Action tickets

Mount Albert Grammar School Dance Department presents



ARTISTRY IN ACTION



7:30pm

Thursday 13 August

Friday 14 August

Centennial Theatre - Mountain Road, Epsom

Tickets

Student & Pensioners \$15

MAGS Staff, Students & under 12's \$10

Adults - \$20

The much-anticipated annual Dance concert *Artistry in Action* will be held at 7.30pm on August 13 and 14 at Centennial Theatre, Epsom.

The concert will feature performances by all of the MAGS Dance classes as well as some outstanding choreographies from our Year 13 and Scholarship students.

Be quick to get your tickets from MAGS Finance from Monday, August 3 as we anticipate they will sell out fast.

Prices: Adults – \$20, students and pensioners – \$15, MAGS staff and students and children under 12 – \$10.

Moving play well-received



The Year 11 Drama Production took place on Wednesday night with a performance of the Australian play *Children of the Black Skirt*. It is a hard-hitting play that explores the place of children throughout Australia's history. The children take turns telling the stories of the spirits trapped in an orphanage. Through sharing their stories the spirits are released.

HOD Drama Gerald Urquhart said, "The play was well-received, with it being booked out days in advance. At the conclusion of the show, the audience sat in quiet contemplation, clearly moved by the performances. The students appreciated such strong support for the work they created.

"The slick show was the result of some very focussed effort by both cast and crew. The creativity and camaraderie of everyone involved is to be applauded." For more photos from the play, click [here](#)

Photos / Ruby Taylor Sinclair

Future Pathways Expo

MH BLOCK 4-7pm

GROUND FLOOR

All NZ universities & a range of Industry Training Organisations & Private Training Organisations.

UPPER FLOOR

Additional providers featuring Interactive displays. Faculty & Subject Rooms. Advice from Faculty staff. Deans & NCEA information.

IMPORTANT

MAGS 2021 Subject Option Choices due 13 August.



FUTURE PATHWAYS EXPO



Term 3 Week 3 Tuesday August 4th : 4.00-7.00pm

The Future Pathways Expo is back next week and will once again be set across both floors of the MH Building.

The Expo – on August 4 from 4pm – features information and advice from universities and training organisations, as well as interactive displays, faculty and subject rooms, NCEA information and advice from Deans.

Confirmed exhibitors are: Lincoln University, ITC, NZDF, AIS, Ignite Colleges, UNITEC (performing & screen arts/architecture/landscape architecture/interior design/sport/all trades/animal & environmental science/business/nursing), AUT, Queenstown Resort College, NZ College of Chiropractic, Excel, Victoria, Cut Above Hair/Elite Beauty, Competenz, ETCO, PIHMS, Media Design School, Education USA, Whitecliffe/NZ Fashion Tech, Crown, Spirit of Adventure, Auckland University, MIT, North Shore Aero Club, Canterbury University, ASB MAGS Farm, Massey University, NZ Marine, Otago University, MITO, BCITO, MAINZ, Waikato University, Techorium, NZ School of Food & Wine, Southern Wings, NZ School of Tourism, NZ Institute of Sport, NZ College of Massage, NZ Management Academies, NZ Culinary Collective, NZ Police, NZ Institute of Quantity Surveyors.

'Missing' painting features in exhibition



Another chapter has been written in the saga of the 'missing' Dame Louise Henderson painting *April*, which, until recently, was on display in the corridor of MAGS' main building.

The artwork was bought by Board of Trustees chair Greg Moyle in 2001 and forms part of the G J Moyle Collection on display around the school.

What Mr Moyle did not know was that curators from Auckland and Christchurch art galleries had been searching high and low for *April*, part of *The Twelve Months* series by Dame Louise, whose work they wanted to display in the [Louise Henderson: From Life exhibition](#)

Auckland Art Gallery had secured 10 of the 12 large-scale paintings from *The Twelve Months* series painted by Dame Louise in the mid-1980s when she was 85.

The whereabouts of *August* were known but it cannot be displayed because it has been altered. But what had happened to *April* was a mystery – until the Auckland Art Gallery's secondary schools educator Luise Fong (pictured above with Mr Moyle) attended a function at MAGS last December and was taken on a tour of the school's G J Moyle Collection. Fong, herself an artist, was struck by the sight of one abstract painting, which at 2.5m high and 1.5m wide, resembled those in *The Twelve Months* series.

Once the art gallery confirmed the work's identity, arrangements began to be made to ship it to Christchurch for their exhibition as it was too late to be shown in Auckland.

Click [here](#) for an image gallery of the exhaustive preparations involved before shipping the artwork safely.



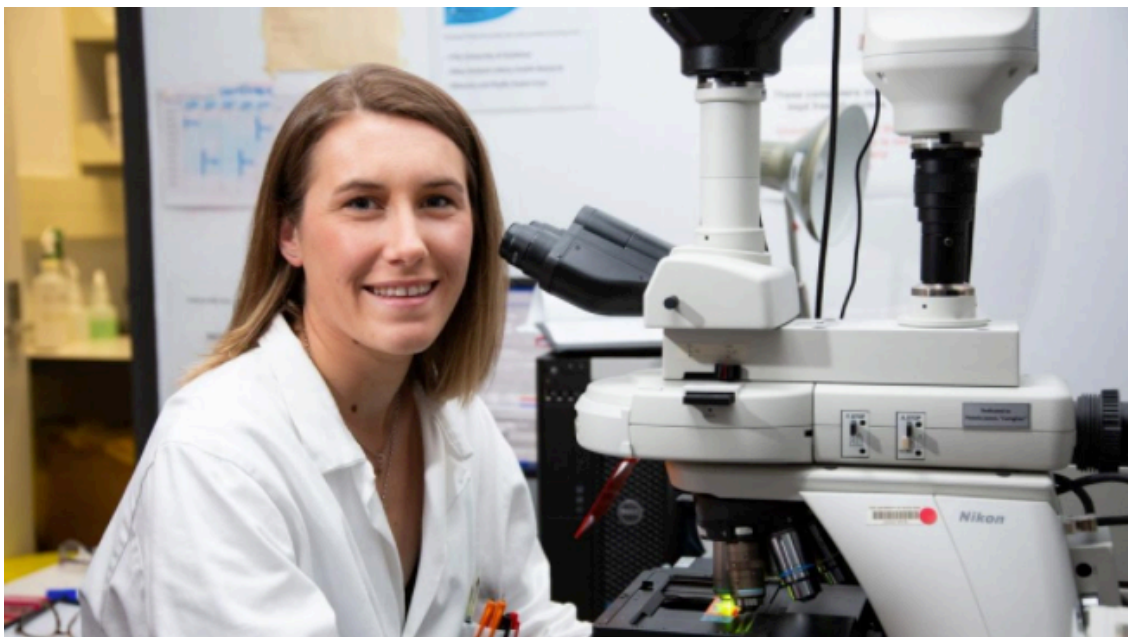
Student travel safety and 'Stranger Danger'

A reminder to parents to discuss with their children the importance of travelling safely to and from school, being aware of what is happening around them and of reporting any inappropriate behaviour.

There have been reports of inappropriate behaviour on the Roy Clements Treeway, the boardwalk that runs from Alberton Avenue to the shopping area where the Noel Leeming store is located opposite St Lukes Mall. In response to this, there has been a Police presence on the boardwalk this week.

Our young people need to make safe choices to ensure their safety wherever they are travelling. For example, they need to be reminded to walk, wherever possible, in twos or threes, and about not taking shortcuts when they are alone or when it is getting dark. The police have asked the school to pass on the request that parents please take the time to remind their sons and daughters of the need to be alert and to take care, and to also not hesitate to call the Police on 111 should they feel in danger or witness any inappropriate behaviours.

Albertian shines in science



Albertian Dr Molly Swanson (2007-11), is making a name for herself in the field of science as a Research Fellow with the University of Auckland's School of Biological Sciences, doing work on motor neuron disease.

Molly, who talks about her work [here](#), was a top academic at MAGS, being named Girls Proxime Accessit in 2011, and a high achiever in the Arts and Sport.

She was awarded a CP Liddell Scholarship, and among her many other achievements she was Open Girls Cross Country Champion, won awards for Music, earned a Blue Cap for Swimming, and was named Best All Round Girl in Year 12 and Year 13.

Junior Excellence Awards



The Junior Excellence Awards for Term 2 were presented to students from Year 9 (pictured above) and Year 10 (pictured below) at assemblies on Monday and Tuesday respectively. Certificates are awarded to up to two students from each mentor class at the end of each term. These awards recognise students who have demonstrated personal excellence by doing one or more of the following:

- shown huge improvement in the quality of work
- submitted outstanding work
- shown significantly improved effort
- exemplified the 'MAGS Way' values
- been a highly supportive and helpful member of their mentor class
- persevered through hardship to achieve success

The list of winners from Year 9 and 10 is [here](#)



Proposal for Creativity Hub

PCSET invites the Community to:

~ Building One ~

*ex Carrington Hospital**

Community Open Day

Venue: Pt Chevalier Library



Saturday 8th August
10am to 4pm

Community Arts, Creative & Well-being Hub

- 270 affordable studio spaces, over 8500 m²
- maker spaces, well-being services, night classes
- youth spaces & workshops, gallery, event & exhibition spaces
- shared office, cafe & meeting spaces

Have Your Say, Share Your Ideas & Vision

~ Links to surveys & contacts below ~

*As part of a feasibility study, by **Pt Chevalier Social Enterprise Trust** (PCSET) on behalf of the partnership between the Crown (MHUD) & Mana Whenua

Point Chevalier Social Enterprise Trust (PCSET), on behalf of the Crown and Mana Whenua, is preparing a feasibility study on making use of Unitec's Building One, while it is temporarily vacated, as a modern community, arts and wellbeing hub.

Comprising 270 studio spaces across 8500sq m, Building One is part of the historically listed site that was home to Carrington Hospital from 1865 to 1992.

With the possibility that the building will be vacant while its reuse is investigated, social entrepreneurs and Pt Chev locals Chris Casey and Graeme Bennett, of PCSET, have identified an "exciting opportunity to connect, regenerate and energise the surrounding diverse communities of Point Chevalier, Mount Albert, Waterview, Avondale, and the wider population of Tāmaki Makaurau".

"There is potential opportunity to make use of this space," says Casey. "From affordable art and creative studio spaces to holistic well-being centres, food offerings, lecture theatres,

community rooms for youth and adult education programmes.”

Extensive community feedback is being sought as part of the feasibility study – PCSET has created two surveys for people interested in the project. “We want to hear from anyone and everyone with an interest,” says Bennett. “Whether you are an arts student, a musician, a local school or community organisation or resident, or whether you can see yourself here as a likeminded business, we would love to hear your thoughts.”

The two surveys are a [Community Survey](#) about the use of Building One and an [Arts/Creative/Wellbeing Survey](#) about how it might work as a creative space. For more information, email [Chris Casey](#) or [Graeme Bennett](#)

Sign up to the Centenary database

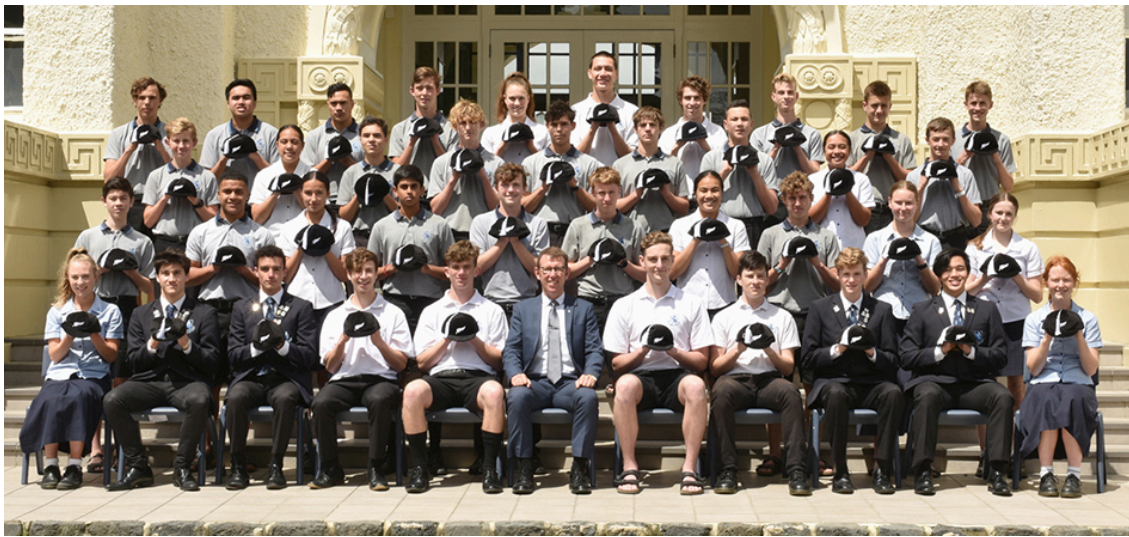


As we get closer to our Centenary in 2022, with events planned for May 9-14, we warmly invite all Albertians to sign up to the database [here](#) to keep up to date with information, communications and events leading up to the Centenary celebration.

Please encourage your friends and peers who were with you at MAGS to attend with you, and to also register at the link.

Sports update

Black Cap applications open



The Sports Department is taking applications [here](#) for the MAGS Black Cap. You must have represented New Zealand between October 24, 2019 and October 12, 2020. To receive your Black Cap at the Sports Dinner on October 21 you will need to submit your application by Friday, September 25. Any performances after September 25 will still be celebrated at the Sports Dinner but the student name will not appear in the programme and your Black Cap will not be embroidered until after the dinner.

- You must have played in a game/sport
- Non-playing or paper teams do not count
- You must be a current MAGS student when you competed in the event

A formal photo of all Black Cap recipients will be taken at School on Wednesday, October 15 at 1.00pm.

Any queries, please email sports@mags.school.nz

Sportsperson of the Year nominations

College Sport Auckland's Young Sportsperson of the Year (YSPOTY) Awards have been held since 1991 to celebrate the outstanding sporting achievements of Auckland secondary school students.

This year, the 30th Annual YSPOTY Awards will be held Thursday, November 19 at 6.30pm at Eden Park to recognise outstanding achievement across many sports.

You can find out more about the awards and fill out a nomination form [here](#)

Nominations close September 7.

Upcoming Premier Sport

Tonight, the Basketball Girls and Boys Premiers are playing away again; the Girls against Baradene at Sacred Heart College at 6pm and the Boys at St Kentigern at 7.30pm.

Also tonight, the still unbeaten Football Boys 1st XI play Sacred Heart College at Bill

McKinlay Park at 6pm.

Tomorrow morning, the Netball Premier 1 team play Westlake Girls at St Kentigern College at 10.30am. At 2.30pm, the Rugby Boys 1st XV are at home to St Peter's College on the Sir BG Williams Field.

On Monday, the Rugby Girls 1st XV make their debut on the Sir BG Williams Field against Manurewa High at 4pm.

On Wednesday, the Rugby League 1st XIII are away against arch-rivals Kelston Boys High at 4pm. At the same time, the Football Girls 1st XI are away at Botany Downs College. At 7pm, the Hockey Boys 1st XI play away to King's College.

That same day sees the Netball Premier 1 team at the Combined Points Tournament, which MAGS won last year.

On Thursday, the Hockey Girls 1st XI play Diocesan 2nd XI at 5pm at Mount Roskill Grammar.

You can see more fixtures and results [here](#)



Alberton Ave, Mt Albert, Auckland 1025
Tel:64 9 846 2044 Fax:64 9 846 2042
www.mags.school.nz



Copyright © 2020 Mount Albert Grammar School, All rights reserved.

Want to change how you receive these emails?
You can [update your preferences](#) or [unsubscribe from this list](#)