



[View this email in your browser](#)



**A Tradition of Excellence**  
9th-14th May 2022



February 13, 2021 / Alberton Avenue, Mt Albert, Auckland 1025 / +64 9 846 2044 / [www.mags.school.nz](http://www.mags.school.nz)

## From the Headmaster

[Weekly Notices](#)

## The GL Weir Sports Centre – Honouring a MAGS Legend!



[Key Dates](#)



Tēnā koutou, e te whānau o Mount Albert Grammar School.

Yesterday, members of the wider MAGS community joined together for the official opening of the new GL Weir Sports Centre.

This building (supported by the MAGS Foundation) is designed primarily as an indoor training facility for our cricketers but it will enjoy use across

many other codes as well as curriculum classes.

The facility carries the name of Albertian GL (Dad) Weir. His story in the life of MAGS is nothing short of extraordinary. One hundred years ago to the day he first walked through the gates of MAGS as a first day 3rd Form (Year 9) student.

By the time he reached his final school year in 1926, he would be selected as Captain of 1st XI Cricket, Captain of 1st XV Rugby and Head Prefect! After schooling, 'Dad' Weir represented Auckland in Rugby and became MAGS' first Test Cricketer, playing 11 Test Matches for New Zealand.

But Dad Weir wasn't done with MAGS quite yet. He returned as a teacher in 1938, and he remained at MAGS for the next 41 years, broken by a period of service in the armed forces during World War II in the Middle East and Italy.

To be able to honour a significant Albertian in such a way is special – and it was equally special to have daughter-in-law Jane Weir present to declare the facility open.

Click [here](#) for the Calendar

### Tuesday, February 16

Year 9 Parents' Evening,  
6.15pm

### Wednesday, February 17

Scholars Assembly, 12.30pm,  
FW Gamble Hall

### Thursday, February 18

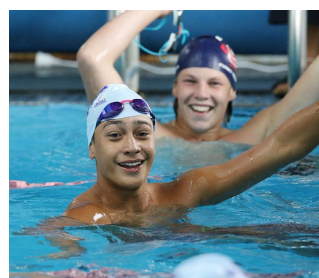
MAGS Athletics  
Championships Day,  
Mt Smart Stadium

### Friday, February 19

Leadership Assembly, 2pm,  
FW Gamble Hall



**Sport**



**Photo Essay**

MAGS Swim Sports Day

The GL Weir Sports Centre promises to do justice to a great Albertian who has helped to lay the foundation for the school we all enjoy today.

Have a great weekend.

Patrick Drumm  
Headmaster

Click [here](#)

**Sports registrations for 2021**

Click [here](#)

**Fixtures and results**

Click [here](#)

---

## GL Weir Sports Centre officially opened



*Director of Cricket Tony Sail presents Jane Weir with the commemorative cricket ball at the official opening of the GL Weir Sports Centre.*

MAGS officially unveiled the GL Weir Sports Centre, its stunning, state-of-the-art indoor sports training facility last night with a function for invited guests.

The all-weather facility is named after Gordon Lindsay Weir (pictured), a foundation pupil (1922-26) and Head Prefect at MAGS, who came back as a teacher for 41 years (interrupted by war service) from 1938-78, and MAGS' first Test cricketer, who represented New Zealand at cricket from 1930-37.

A highlight of the event was former White Fern cricketer and Albertian Georgia Guy (2007-11) bowling a commemorative ball to First XI Cricket captains Keertivaasan Prakash and Shivani Unka. The trio then signed the ball and Director of Cricket Tony Sail presented it to GL Weir's daughter-in-law Jane Weir.

Inside, the centre has curtained nets that can be reconfigured to allow for different sports to train, including cricket, football, hockey, netball and tennis.



Money from the MAGS Foundation helped to build this 800sqm facility, which is being primarily used for cricket and PE at the moment.

You can read more about the official opening and see more photos from the event [here](#)



*MAGS' First XI Cricket captains Keertivaasan Prakash and Shivani Unka with Albertian and former White Fern cricketer Georgia Guy.*

---

## Art Show dates announced



The annual MAGS Art Show is a highlight on the school calendar, and is back this year from August 13-15.

As well as raising funds for the school, it brings our school and local community together to enjoy a show of talented New Zealand artists and our top MAGS student artists. There are also performances by MAGS' talented Performing Arts students throughout the show. We are looking for new volunteers to help organise this year's show. From the gala night to the weekend showings to the packdown afterward, we need all types of skills and abilities. Please express your interest by emailing the committee at [magsfom@gmail.com](mailto:magsfom@gmail.com)

---

## Year 9 Parents' Evening

Year 9 Parents are warmly invited to attend an evening to meet Senior Leaders, Year 9 Deans and Mentor Teachers, plus our Guidance Staff.

**Date:** Tuesday, 16 February

**Time:** 6.15pm-7.30pm approximately

**Location:** Albertian Quadrangle, behind the main building

The evening begins with light refreshments in the Quad, followed by a welcome from Headmaster Mr Patrick Drumm in the FW Gamble Hall.

There will also be an opportunity to meet with your child's Mentor Teacher and Peer Support Leaders, who will outline their roles and provide you with some information that may assist you as your child settles into school.

Year 9 students should have received an RSVP slip from their Mentor Teachers this week or you can download it [here](#) and return it to the Mentor teacher on Monday.

---

## Artist helping students with installation



Working in the Visual Art Department over this week and next week is famous New Zealand artist Evan Woodruffe (pictured above).

Students are learning about abstract art and collaboration, while creating a large scale installation piece. This artistic addition to the school will sit outside the school hall.

Approximately 560 perspex squares will be combined into an uplifting celebration of colour and energy.

Evan has regularly shown at public institutions in New Zealand. He has exhibited across New Zealand, America and Asia. He made a significant contribution to the NZ Special Exhibition at the 8th Beijing Biennale (2019). He produced a major exhibition for Tauranga Art Gallery (2018), a large temporary work for Dunedin Public Art Gallery (2015), and performance work for the 5th Auckland Triennial (2013).

Visual Art teacher Ms Leonard said, "Many thanks to Mr Corkery, the Art Department staff, the Visual Art Leaders, Mr Drumm, Evan Woodruffe and students for their support of this project."

---

## Tasty fundraiser for Sports

# MAGS SPORT FUNDRAISER 2021



**SUPPORT YOUR TEAM  
&  
SUPPORT YOUR SCHOOL**

**\$60 WHOLE SNAP FROZEN EYE FILLET  
(APPROX 1.4-1.8KG)**



**ORDER BY 12/03**

Link <https://forms.gle/VW56DWop1wG6TgoS9>

Thanks to Born & Bred we are able to bring you this Mount Albert Grammar School Sport fundraiser.

With \$20 of every fillet sold going towards the Sports program at MAGS, this is a great way to support our school.

Of the \$20, \$15 goes to your nominated team or sport and \$5 to sport equity to help MAGS families that struggle with the costs associated with sport.

To find out more and place your order, click [here](https://forms.gle/VW56DWop1wG6TgoS9)

---

## Keep up to date with the School App

Keep up to date with the MAGS app – free from the App Store or Google Play.

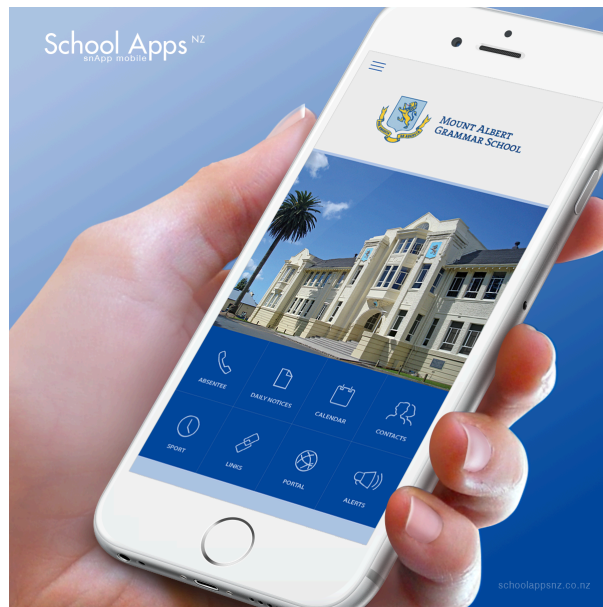
Search for “SchoolAppsNZ”, and load the app on to your phone.

You can then search for and add as many schools as you want so you can receive alerts from multiple schools.

MAGS parents can access school newsletters (under 'Links'), Daily Notices, the Kamar portal, teachers' contact details, and notify the school about absences.

If you are using the app to notify the school about absences, please load and use the child's Student ID Number as this helps to log absences more effectively.

On the app, parents and students can check the School Calendar and sync events with their own calendars, and choose groups about which they wish to receive alerts.



## Student travel concessions

Getting a secondary student discount for public transport has never been easier. Secondary school students, aged 16 to 19, can go online and activate their student discount using their National Student Number (NSN). And with a student discount organised, they'll be able to travel and get 40% or more off full price bus, ferry and train fares. Click [here](#) to find out more about this process, and to update your concession.

### Face Coverings/Masks on Public Transport

It is currently mandatory for everyone over 12 to wear a mask or face covering on public transport services.


Students and families are reminded that this rule applies on the way to and from school also.

It is also recommended that students scan the QR code available on the bus, train or ferry, if they have access to a mobile phone. On school bus services, where a bus only takes school students, it is not a requirement to wear a mask.

**Face covering on.**

**Tag on.**

**Scan the QR code.**

 Unite against COVID-19

## Historical photos



Prime Minister Sidney Holland was here in 1956 to open the War Memorial Pavilion ('the Grandstand').

He is accompanied by Selway Andrews, President of the Old Boys' Association. There is a guard of honour of cadets with .303 rifles with fixed bayonets. Headmaster Murray Nairn is behind with his wife Nancy.

This photo is part of Set 57, recently added to Historical Images on the MAGS website [here](#). These images are sourced and annotated by our Archivist, Brian Murphy.

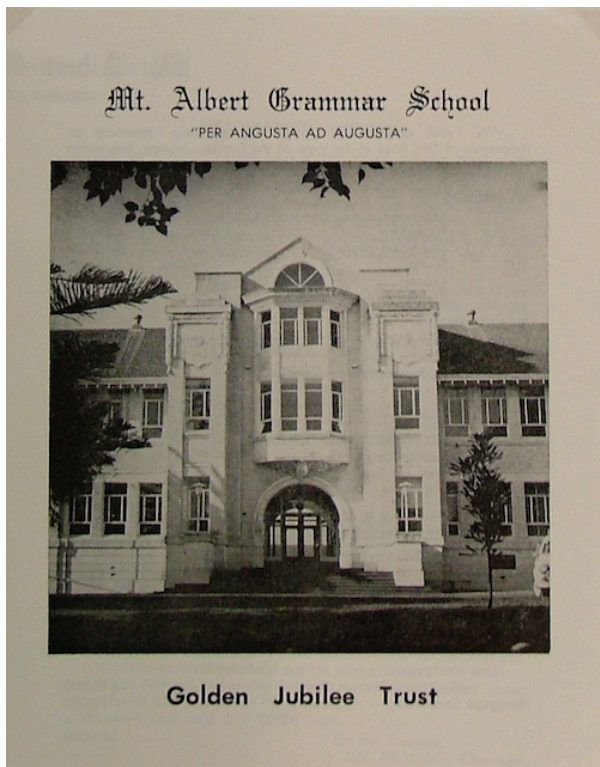
---

## Sign up to the Centenary database

As we get closer to our Centenary in 2022, with events planned for May 9-14, we warmly invite all Albertians to sign up to the database [here](#) to keep up to date with information and events leading up to the Centenary celebration.

Please encourage your friends and peers who were with you at MAGS to attend with you, and to also register at the link.





---

## Sports Update

### Sports registrations for 2021



MAGS' Sports Department has opened up online registrations for all sports for Terms 1 to 3.

The online form includes likely costs and dates where possible, although these could be subject to change.

Trial and training dates will be confirmed closer to the time.

Students can click [here](#) to register for their chosen sport.

---

## General Notices

### Alberton Market Day

You can shop local at Alberton's quaint Sunday market this weekend.

Pick up something from one of the artisan food stalls and have a picnic in the heritage garden or a spot of tea in the Victorian ballroom.

As well as plenty of cakes and sweets, there will be other specialty goods such as preserves, pickles, jams, gourmet sausages, cured meats, honey, chocolate, deli products, health tonics and seasonal fruit and veg. Local

makers will be selling jewellery, candles, homewares, soaps and more.

Boutique plant nursery Puriri Lane will have a range of hard-to-find cottage perennials on offer. Gardener extraordinaire Lynda Hallinan will be on-site selling vintage and upcycled creations.

In free workshops, learn about composting systems – worm farming (at 11am) and cold composting and bokashi (at 12.30pm) with Judy Keats from the Compost Collective. See what suits you best and get \$40 off the system of your choice thanks to Auckland Council. House entry – \$10 adults, free for children.

Alberton Market Day – Sunday, 14 February 10am-2pm, free entry.



---

Alberton Ave, Mt Albert, Auckland 1025  
Tel:64 9 846 2044 Fax:64 9 846 2042  
[www.mags.school.nz](http://www.mags.school.nz)

*Copyright © 2021 Mount Albert Grammar School, All rights reserved.*

Want to change how you receive these emails?  
You can [update your preferences](#) or [unsubscribe from this list](#)